

# CLIMIA

Local room air conditioner CMK 2950/CMK 2950 silver-grey

## Operating instructions



**CLIMIA**



# Local room air conditioner CMK 2950

## Table of Contents

1.0 Safety information	4-9
2.0 Guarantee	10
3.0 Intended use	10
4.0 Environmental protection and recycling	10
5.0 Transportation and packaging	11
6.0 Unit description	11
7.0 Operation	12-13
8.0 Before commissioning	14-15
9.0 Commissioning	15
10.0 Shutdown	15-16
11.0 Care and maintenance	16
12.0 Troubleshooting and customer service	17
13.0 Electrical wiring diagram	18
15.0 Unit illustration	20
16.0 Spare parts list	21
17.0 Accessories	21
18.0 Technical data	22
EC Declaration of Conformity	23

**Carefully read this operating manual prior to commissioning/using the units!  
This operating manual is a translation of the German original.**

**This manual is an integral part of the unit and must always be kept in the vicinity of the installation location or on the unit itself.**

Subject to modifications. No liability accepted for errors or misprints!

## 1.0 Safety information

### General safety notes

Carefully read the operating manual before placing the unit in service for the first time. It contains useful tips and notes as well as hazard warnings to prevent injury or material damage. Failure to follow the directions in this Manual can endanger persons, the environment and the equipment itself and will void any claims for liability.

- Keep this operating manual and the refrigerant data sheet near to the unit.
- This unit may only be installed and operated as described in this manual.
- Independent conversion and/or modification of any kind is strictly prohibited.
- National regulations in connection with installation must be observed.
- Children must not be left unsupervised when close to the unit.
- For safety reasons, people with mental, physical or other health limitations must not operate this unit unattended.
- The unit is not permitted to be operated with damaged cables. The unit must be repaired by a specialist immediately.
- The unit may only be operated via a power supply with earthing.
- The use of extension cables is not recommended.
- The air filter must be cleaned at intervals of no more than 2 weeks.
- The unit is not permitted to be operated in the vicinity of heat sources.
- The unit must be transported upright. Residue from the condensate must be drained off before transport. The unit must be stood upright for 1 hour prior to commissioning.
- Combustible substances and pressure containers must be kept at least 50 cm from the unit.
- The unit must not be stored and operated in rooms with oil, gas or sulphur.
- The unit must always be switched off with the on/off switch.
- Do not place anything on the device in particular heavy or hot objects.
- Repairs may only be carried out by authorised and certified specialist personnel.
- The unit must not be covered with plastic sheets.
- This unit must be disposed of professionally in accordance with environmental protection.
- The safety notes in regards to the room sizes and the flammability of the refrigerant must not be removed from the machine.
- The unit may only be operated in well ventilated areas.
- The unit can be used by children 8 years and up and by persons without physical, mental or other health limitations if this knowledge has been obtained via the necessary safety notes.
- Children must never play with the unit.
- Cleaning the unit must not be carried out by children without parental/guardian supervision.

### Additional safety notes when handling refrigerant R290



### Warning of inflammable substances

- The refrigerant R290 fulfils the requirements of the European F-Gas regulation.
- The unit contains 0.3 kg of the refrigerant R290.
- The maximum permitted amount of refrigerant R290 is 0.3 kg.
- The unit must not be burned, drilled or pierced.

# Local room air conditioner CMK 2950

- Only use cleaning agents which have been approved by the manufacturer for cleaning.
- The unit must never be operated in rooms with naked flames (e.g. gas heaters, open fireplaces, etc.).
- Refrigerant circuit components must not be deformed.
- The contained refrigerant R290 is colourless and odourless.
- The unit must not be stored or operated in rooms which have a room area of 14.4 m<sup>2</sup> or less.
- The accumulation of refrigerant due to leakages can lead to a fire and explosions in rooms which are too small due to the development of heat or ignition sources.
- The units must be stored carefully. Mechanical damage must be avoided.
- Intervention in the refrigeration circuit may only be done by certified specialist personnel taking into account the safety notes of the manufacturer.
- Maintenance and repairs may only be carried out by authorised personnel which have the corresponding knowledge in regards to flammable refrigerant.

## WARNING!

*Do not use anything other than the agent recommended by the manufacturer to speed up a possible defrosting process or to clean the unit. The unit may only be operated and stored in rooms where there are no devices with potential ignition sources. Do not go below the minimum room area of 14.4 m<sup>2</sup>. Note that leaking refrigerant is colourless and odourless. The unit must not be burned or pierced!*

## Safety instructions for the operator

The operational safety of the units and components is only assured providing they are used as intended and in a fully assembled state.

- This unit may only be installed and operated as described in this manual.
- Independent conversion and/or modification of any kind is strictly prohibited.
- Children must not be left unsupervised when close to the unit.
- For safety reasons, people with mental, physical or other health limitations must not operate this unit unattended.
- The unit is not permitted to be operated with damaged cables. The unit must be repaired by a specialist immediately.
- The unit may only be operated via a power supply with earthing.
- The use of extension cables is not recommended.
- The air filter must be cleaned at intervals of no more than 2 weeks.
- The unit is not permitted to be operated in the vicinity of heat sources.
- The unit must be transported upright. Residue from the condensate must be drained off before transport. The unit must be stood upright for 1 hour prior to commissioning.
- Operating the units in rooms with potential ignition sources (naked flames, gas or electrical heaters, fireplaces) is prohibited.
- The unit may only be installed, operated and stored in rooms larger than 14.4 m<sup>2</sup>.
- Protective covers (grilles) over moving parts must not be removed from units that are in operation.
- Do not operate units or components with obvious defects or signs of damage.
- Contact with equipment parts or components can lead to burns or injury.
- The units and components must not be exposed to any mechanical load, extreme levels of humidity or extreme temperatures.

# CLIMIA

- Never drill through the housing cover or have the unit come into contact with fire.
- Rooms in which refrigerant may escape must be adequately aerated and ventilated. Otherwise there is danger of suffocation.
- All housing parts and unit openings, e.g. air inlets and outlets, must be free from foreign objects, liquids and gases.
- The local room air conditioners are designed for flexible use in living and work spaces. Year-round operation is not recommended. Use in server rooms is prohibited.
- Do not leave the units running for an extended period unsupervised.

Improper use can cause serious damage to the unit. Read this manual carefully before commissioning!

The unit and in particular the control panel must not come into contact with water.

Do not allow children to play with the unit



Do not stand or sit on the unit.



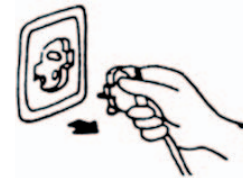
Unplug the power plug before cleaning the unit.



Never cover the air inlets and outlets.



Unplug the power plug when not in use for a long period.



Ensure the voltage is correct (220-240 V AC, 50 Hz).



Do not disassemble housing parts (consult a specialist company).



Do not operate the unit with defective cables or sockets.



# Local room air conditioner CMK 2950

## Safety instructions for certified specialist personnel

### • Check the work area

Before starting work on units with combustible refrigerants, ensure that any potential ignition sources are removed and the risk of igniting the refrigerants is eliminated. The aforementioned safety notes for repairing the units must be observed at all times. Work may only be carried out by authorised specialist personnel with knowledge of handling combustible refrigerants!

### • Prepare the work area

Any persons present must be informed about the repair process accordingly and persons not involved must vacate the work area. Working in rooms with limited space is prohibited. Ensure that sufficient space is available at the workplace. Ensure that the ambient conditions are suitable for working with combustible refrigerants.

### • Identify refrigerant leaks, check the atmosphere

Refrigerant may unexpectedly escape when working on the refrigerant circuit. Ensure that the atmosphere in the workplace is not combustible at all times by using suitable refrigerant detectors. Be sure to ensure that the refrigerant detector used is suitable, approved and calibrated for use with refrigerant R290.

### • Provide fire extinguishers

Provide appropriate fire extinguishers before starting work. For this purpose, dry powder or CO<sub>2</sub> fire extinguishers are suitable.

### • Remove any potential ignition sources

Leaking refrigerant in combination with corresponding ignition sources can lead to an explosion. All ignition sources must therefore be kept away from the work area at all times! This also includes the smoking of cigarettes. Inform all persons present that this includes the affixing of safety notes and the closing off of the work area.

### • Sufficient ventilation

Before starting work, ensure that the work area is outdoors or has sufficient ventilation. A continuous ventilation stream is required while working. The safety of the persons working must be guaranteed by the exhaust air equipment: potentially leaking refrigerant must be lead away safely and drained into the atmosphere in an optimum manner.

### • Checking the refrigerant circuit

If electronic components need to be replaced, ensure that the spare parts have the same function and identical technical specifications. The maintenance and replacement regulations of the manufacturer must always be observed and complied with. Please contact the support of the manufacturer with any problems or queries.

The following safety checks must be carried out when using combustible refrigerants:

- The fill level adjusts to the size of the rooms in which the unit is located.
- The exhaust air equipment and its outlets function properly and are not blocked or obstructed.

### • Checking the electronic components

A component and safety check must be carried out before repairing and maintaining electronic components. If safety cannot be ensured due to a defect on a component, installation must not take place until safety can be guaranteed again. If the defect on the spare part cannot be remedied and downtime of the unit is no longer acceptable, an adequate temporary solution must be arranged. The owner/operator of the unit must be informed about this. The detailed safety check must include the following aspects:

- Capacitors are discharged. Discharging must be done in a safe process to prevent flying sparks.
- There must be no electronic components active or uninsulated wires while filling, repairing or cleaning.
- There must be no earthing of the system.

- **Repairs to closed components**  
Before repairing closed components/housing parts, the unit must be free from voltage. If carrying out the repairs free from voltage cannot be avoided, the critical points of potential refrigerant leakages must be checked using a leak detector. The following notes must be observed when working on electronic components if the housing is changed in such a way that its safety is influenced. This also relates to cases where the lines are damaged, there is excessive or incorrect pin assignment, connections are not assigned in the original way or similar deviations to the expected condition are determined.
- **Repairing of intrinsically safe components**  
Do not introduce permanent inductive or capacitive loads into the existing circuits without ensuring that the maximum permitted voltages and amperages of the assemblies and lines are not exceeded. Intrinsically safe components are individual components that can be operated in the presence of flammable substances. The test equipment must be adjusted according to the situation-dependent conditions. Only use components which are officially approved by the manufacturer as spare parts. Unapproved components can cause a fire in the event of a leakage in the refrigerant circuit.

- **Wiring**  
Lines must be checked for the following damage:
  - Damage to the insulation -
  - Corrosion at the contact points
  - Excessive pressure on the lines
  - Damage due to vibrations
  - Damage due to sharp edges
  - Damage due to other influences not mentioned hereAlso consider the ageing of the material and continuous vibration loads due to compressors or fans when checking.
- **Identify combustible refrigerant**  
Do not use any potential ignition source when searching for refrigerant leaks under any circumstance. The use of a leak detection lamp or other similar devices with a naked flame is not permitted.
  1. Ensure that the components are installed correctly.
  2. Ensure that sealing materials are not changed in such a way that combustible gases or objects could penetrate into the interior of the components.
  3. Spare parts must correspond to the manufacturer's specifications.

**NOTE!**

*The use of silicones can influence the effectiveness of leak detection devices!  
Intrinsically safe components must not be insulated before starting work!*

- **Leak detection methods**  
The following leak detection methods are permitted for systems with combustible refrigerants. Electronic equipment must be used for detecting leaks. These must be selected with the sensitivity matched to the situation and recalibrated if necessary (calibration must take place in a refrigerant-free environment). The leak detection device must be adjusted to the lowest flammability limit (LFL) of the refrigerant. Liquid leakage instruments are permitted for most refrigerants. Chlorinated substances are the exception here as the chlorine in combination with the refrigerants can cause corrosion on the copper cables. If a leak is detected, all potential open ignition sources must be removed immediately. If a leak has been detected in the system which requires reworking of the piping in the form of soldering, the system must be completely free of refrigerant or, if possible, the affected part disconnected from the system using stopcocks. The affected system parts must be flushed with oxygen-free nitrogen run before and during the repair work.
- **Emptying and evacuating the system**  
If the refrigerant circuit must be opened for repairs or other reasons, this must be carried out in a safe and professional way. In any event, proceed with extreme caution since ignition may occur at any time!



# Local room air conditioner CMK 2950

Stick to the following procedure:

1. Drain the refrigerant
2. Flush the system with inert gas
3. Evacuate
4. Repeat steps 2 to 3 if required
5. Opening the system by cutting or soldering

The system must be flushed with oxygen-free nitrogen in order to guarantee safety. The flushing process must be repeated multiple times if necessary. Do not use compressed air or oxygen for the flushing process! After evacuating, flushing takes place by filling with dried nitrogen until the operating pressure is reached and then the system must be evacuated again. This flushing process must often be repeated until there is no more refrigerant in the system. After the last flushing, the system must be brought to the ambient pressure in order to start work. The flushing process is indispensable when soldering work is required on the piping. Ensure that the vacuum pump outlet is not near an ignition source and continuous ventilation is guaranteed.

- **Filling process**

The following requirements for the general specifications must also be fulfilled during the filling process:

- Ensure that no contamination occurs from other refrigerants (residues in the filling equipment).
- Keep the lines as short as possible to minimise the likelihood of residues forming.

- Filling bottles and cylinders must be stood upright.
- Ensure that the system is earthed before filling.
- Label the system with the refrigerant type designation after filling
- Never exceed the maximum fill level. The system must be checked for leaks (pressure test!) before filling. The system must be checked for leaks once more after filling and before commissioning. Check for leaks again when leaving the work space.

- **Labelling when shutting down**

If a unit must be taken out of operation and the refrigerant must be disposed of, the unit must be labelled with the date and a signature. Ensure that the note remains attached to the combustible refrigerant.

- **Transportation of units which contain combustible refrigerants**

National provisions must be observed.

- **Storing of units which contain combustible refrigerant**

National provisions must be observed.

- **Transportation without the original packaging**

If the units are transported without the original packaging, they must be packed in such a way that mechanical damage is prevented. The units must be transported upright.

## 2.0 Guarantee

As a prerequisite for any guarantee claims to be considered, it is essential that the ordering party or its representative complete and return the "certificate of warranty" to Climia Intakt GmbH at the time when the units are purchased and commissioned. The guarantee conditions are listed in the "General terms and conditions of business and supply". Furthermore, only the parties to a contract can conclude special agreements beyond these conditions. In this case, contact your contractual partner in the first instance.

## 3.0 Intended use

Depending on the model, the units and the additional fittings with which they are equipped are only intended to be used as an air-conditioner for the purpose of cooling or heating the air in an enclosed space. Any different or additional use is a non-intended use. The manufacturer/supplier assumes no liability for damages arising from non-intended use. The user bears the sole risk in such cases. Intended use also includes working in accordance with the operating and installation instructions and complying with the maintenance requirements.



## 4.0 Environmental protection and recycling

### Disposal of packaging

All products are packed for transport in environmentally friendly materials. Make a valuable contribution to reducing waste and sustaining raw materials. Only dispose of packaging at approved collection points.

### Disposing of the units and their components

Only recyclable materials are used in the manufacture of the units and components. Help protect the environment by ensuring that the units or components (for example batteries) are not disposed of in household waste, but only in accordance with local regulations and in an environmentally safe manner, e.g. using authorised disposal and recycling specialists or council collection points.



# Local room air conditioner CMK 2950

## 5.0 Transportation and packaging

The units are shipped in sturdy transport packaging. Check the unit immediately after delivery and make a note of any damage (please take photos of the damage) or missing parts on the delivery note. Inform the forwarding agent and contractual partner.

Please keep the packaging safely for any returns.

Claims under guarantee made at a later date will not be accepted.

## 6.0 Unit description

The local air conditioning unit is particularly well suited to flexible use.

The local room air conditioner comprises a floor-standing unit for the indoor area and an exhaust air hose to conduct the heat away. The indoor unit extracts the heat from the room to be cooled by means of an evaporator (heat exchanger) and transfers it to the internal cooling cycle. This releases the heat back to the outside via another heat exchanger (condenser) by means of the flexible exhaust air hose.

The condensate arising during cooling mode is continually drained off via the condenser by means of a condensate pump located in the unit - the condenser evaporates the condensate and discharges it to the outside via the exhaust air hose.

The unit filters and dehumidifies the air thereby creating a comfortable room climate. It works fully automatically and offers numerous additional options thanks to its microprocessor controller. The operation of the unit can be conveniently operated by means of the infra-red remote control included.



Fig. 1 Front view



Fig. 2 Rear view

## 7.0 Operation

The system can be operated by means of the control panel on the unit or via the standard infrared remote controller. The functional operation of the keys is identical, however, the designation may vary. The batteries must be correctly inserted before the infrared remote control is used.

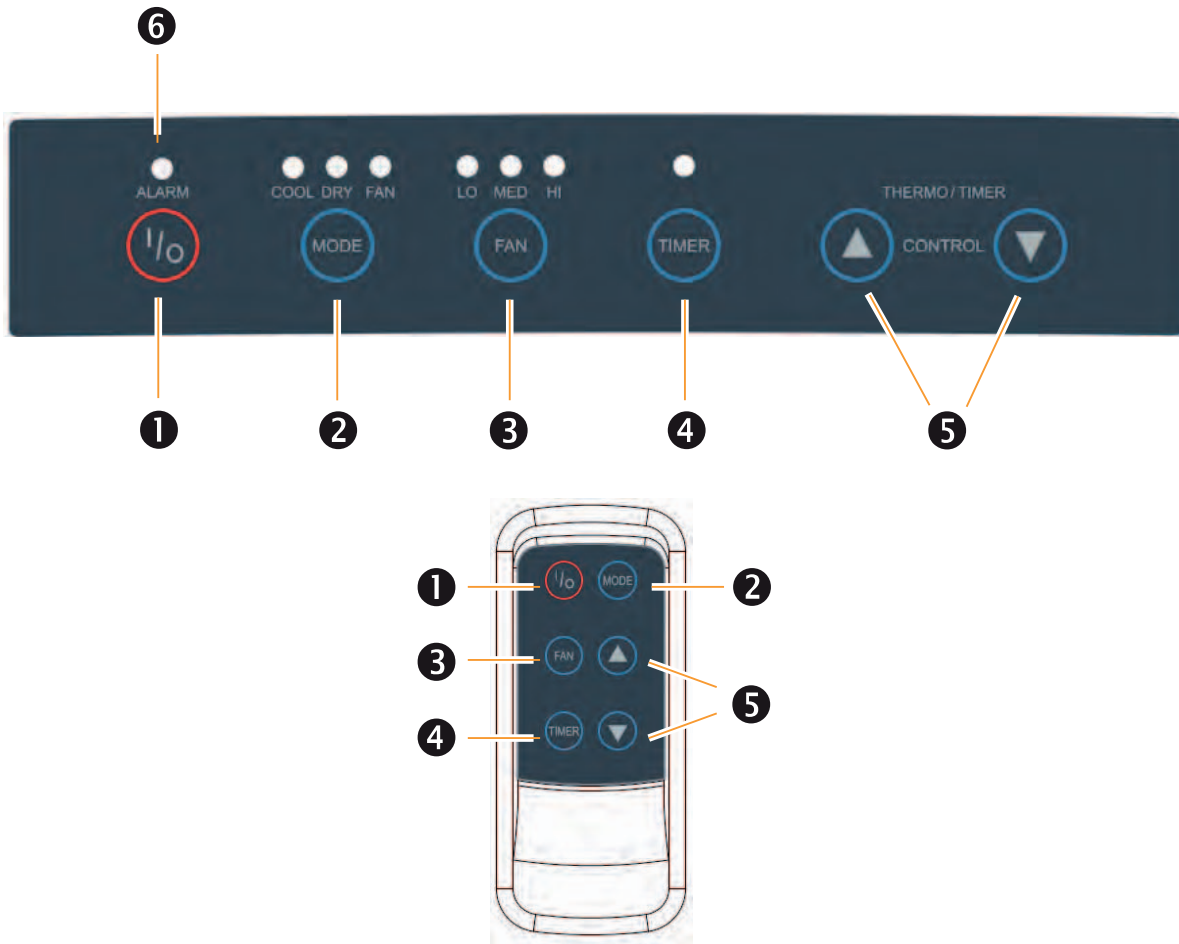


Fig. 3 Remote control and control panel

### Legend:

**1 Key "I/O" (On/Off)**

This key switches the unit on or off.

**2 Operating mode "Mode" key**

Actuation of this key allows the operator to select between the cooling mode (COOL), dehumidification mode (DRY) or circulated air mode (FAN). The LEDs indicate the selected operating mode.

**3 "FAN" speed key**

With this key it is possible to set the fan speed and therefore the air flow. It is possible to select between the speed stages low (LO), medium (MED) and high (HI). The LEDs show the selected fan speed.

**4 "TIMER" key**

This key can be used to activate a switch-on or switch-off delay.

The switch-on delay is activated when the unit is switched off, whilst the switch-off delay is activated when the unit is switched on. Using the arrow keys, it is subsequently possible to set the desired delay in 1-hour steps. If no further change is made for a few seconds, the unit saves the setting and the set time is shown on the display. The LED lights up when the timer is activated.

# Local room air conditioner CMK 2950

## 5 “▲/▼” keys- THERMO/TIMER CONTROL”

By pressing the “▲/▼” keys the target temperature can be set. This can be adjusted in a range of 16 to 32 °C in 1 °C steps.

## 6 “ALARM” indicator

The condensate arising will be collected in an internal reservoir, fed to the condenser and evaporated there. The evaporated condensate will then be fed to the outside via the exhaust air hose. If the condensate cannot be fed away then a fault shut-down is initiated along with an LED 6 signalling this.

In order to put the unit back into operation again after this fault shut-down, proceed as follows:

1. Switch the unit off with the “I/O” key and pull out the power plug.
2. Place a suitable container underneath the condensate drain of the internal reservoir. The condensate drain is located on the lower centre on the rear of the unit.
3. Pull out the stopper from the condensate drain and collect the condensate that drains out.
4. Then insert the stopper once again.

### OUR TIP

*You will achieve a pleasant room temperature if you set the desired target temperature max. 4 to 7 °C below the outside temperature.*

## Infrared remote control - General notes

- With the unit switched on any change to the settings will be automatically transferred to the room air conditioner. The proper receipt of data will be acknowledged with an audible "beep".
- To operate the infrared remote control it should be pointed towards the receiver. The receipt of data is only possible if there are no objects between the transmitter and the receiver.
- If the system is shut down for an extended period it is advisable to remove the batteries from the remote control.

### OUR TIP

*Never use new and used batteries at the same time, remove discharged batteries immediately and replace these with new batteries of the prescribed quality as there is a danger of discharged batteries leaking.*

## Inserting the batteries into the remote control

Before initial commissioning, insert the supplied batteries (2 each, type AAA) into the remote control.

1. Slide the battery compartment cover on the rear of the remote control to open it.
2. Insert the batteries with the correct polarity. Observe marking in the battery compartment.
3. Close the battery compartment again.

### OUR TIP

*Help by reducing energy usage in stand-by operation! If the unit, the system or the components are not being used, we recommend disconnecting the power supply. Our recommendation does not apply to safety relevant components.*

## 8.0 Before commissioning

The unit is positioned at the desired location with the discharge side pointing into the room. When positioning, observe the following notes.

- After unpacking the unit let it sit on its transport rollers for at least 5 minutes before you switch it on.
- Set the unit down in a stable position on a level and firm floor. If the floor is uneven then this can lead to vibrations and disturbing noises.



- Check whether the stopper in the condensate drain is present and correctly installed. There is a risk of uncontrolled condensate leakage after commissioning.

Condensate drainage with stopper



Condensate emergency drain with stopper

- Never operate the unit without the air inlet filter. Otherwise, the fins of the heat exchanger can become dirty and the unit loses performance.

Recirculated air filter



- Ensure that persons and sensitive objects, such as plants, are not placed directly in the air flow emerging from the unit.

### Conduct the warm exhaust air away

#### CAUTION!

*The exhaust air hose should always be laid rising in the direction of air flow and must not be extended.*

In cooling mode the unit creates warm moist exhaust air, which must be conducted away from the room to be cooled. For this reason it is necessary to plug the exhaust air hose into the outlet opening on the rear of the unit.

- Ensure that the catches for the exhaust air hose latch securely into the



two openings of the connection aperture. Do not lay the flexible exhaust air hose with tight bends and do not kink it in order to be sure of effective operation and to avoid this causing damage to air ducting components!

- The exhaust air of the unit contains a certain amount of moisture. For this reason it is advisable to feed the exhaust air to the outdoor area or to outdoors.

#### Exhaust air routing variants

You can route the exhaust air out of the building as follows:

##### Via a flat nozzle

The flat nozzle supplied can be used in various different ways. It is possible to feed the flat nozzle through an open window and fasten it by means of Velcro and a window suction cup (**Fig. 4, page 15**).

Likewise the flat nozzle can be hung in a tilted window (**Fig. 6, page 15**).

#### CAUTION!

*There must be a minimum clearance of 30 cm between the rear of the unit and the wall.*

- All extensions to the power supply must be of a sufficient cable size and must only be used fully rolled out.



#### OUR TIP

*In addition, with direct solar radiation close the curtains and blinds and keep the windows and doors closed during operation.*

# Local room air conditioner CMK 2950



Fig. 4 Exhaust air with open window



Fig. 5 Exhaust air with tilted window

## Via a wall pass-through

The hose supplied is firmly attached to a wall pass-through. A suitable wall pass-through is available as an accessory (**Fig. 6**).



Fig. 6 Wall pass-through

### NOTE

*In some circumstances routing the exhaust air via a firmly attached exhaust air hose, e.g. through closed doors or windows, can lead to negative pressure in the room in which the unit is being used. If this should reduce the performance of the unit then arrange for the pressure to be equalised.*

## 9.0 Commissioning

Before every commissioning the air inlet and outlet openings should be checked for foreign bodies and the air inlet filter must be checked for dirt. Blocked or soiled grills and filters must be cleaned immediately, see "Care and maintenance" chapter.

### Cooling mode

1. Switch the unit on with the "I/O" key.
2. Select cooling mode with the "MODE" key.
3. Set the desired target temperature with the "THERMO/TIMER CONTROL" keys. The selected target temperature will be shown in the display. If the fan speed selected is too large or too small then this can be adjusted with the "FAN" key.

### Recirculation mode

1. Switch the unit on with the "I/O" key.
2. Select recirculation mode with the "MODE" key.

## 10.0 Shutdown

### Temporary shutdown

#### NOTE

*Never switch off a running unit by pulling out the power plug!*

If it is planned to shut down the unit for longer periods e.g. during the winter, proceed as follows:

1. Let the unit run in recirculating operation for approx. 2 hours in order to dry the surfaces of the evaporator fins. This will transport the remaining moisture out of the unit and this will avoid unpleasant odours when the unit is re-commissioned.
2. Switch the unit off with the "I/O" key, pull out the power plug and wind up the power supply. Ensure that the cable is not kinked or too severely bent. The line can be fastened to the rear of the unit.
3. Place a suitable container underneath the condensate drain of the internal reservoir. The condensate drain is located on the lower rear side of the unit.
4. Pull out the stopper from the condensate drain and collect the condensate that drains out.
5. Then insert the stopper once again.  
A missing stopper or an incorrectly inserted stopper will result in condensate leaking out after re-commissioning.

6. Store the unit in an upright position in a cool, dry and dust-free location protected from direct sunlight. Cover the unit with a synthetic cover to protect it against dust if desired.

## Permanent shutdown

Ensure that units and components are disposed of in accordance with local regulations, e.g. through authorised disposal and recycling specialists or at collection points.

Intakt GmbH or your contractual partner will be pleased to provide a list of certified firms in your area.



Fig. 7 Changing the filter



Fig. 8 Cleaning with lukewarm water

## 11.0 Care and maintenance

Regular care and observation of some basic points will ensure trouble-free operation and a long service life.

### CAUTION!

*Care and maintenance work may only be carried out if the unit is disconnected from electrical power.*

- Only clean the unit using a damp cloth. Do not use a jet of water.
- Do not use any caustic, abrasive or solvent-based cleaning products.
- Only use suitable cleaning agents, even in the event of severe soiling.
- Ensure that no moisture gets into the unit. Clean the exhaust air and outlet openings regularly and thoroughly. This is where dirt most often collects first.
- Clean the air filter on the indoor unit at regular intervals, and more frequently if necessary.
- We recommend that you take out a maintenance contract with an appropriate specialist firm. This will guarantee that your equipment always operates reliably!

### NOTE

*Check the level of dirt on the heat exchanger fins as required.*

## Filter cleaning

The unit is equipped with an air filter. This can be withdrawn from the rear of the unit. The filter must be cleaned at regular intervals. Clean the air filter at intervals of no more than 100 operating hours. Reduce this interval in the case of heavily contaminated air.

1. Switch the unit off and pull out the power plug.
2. Pull the filter out of the unit (**Fig. 7**).
3. Clean the dust off the filter. Use a vacuum cleaner in the event of slight soiling.
4. In the event of heavy soiling, clean the filter carefully in lukewarm water (**Fig. 8**).
5. Allow the filter to dry in the air.
6. Insert the filter back into the unit.
7. Ensure that the filter is dry and undamaged.

### CAUTION!

*Never operate the indoor unit without the original filter. Without the filter, the heat exchanger fins on the indoor unit will be contaminated and the unit will become less efficient.*



# Local room air conditioner CMK 2950

## 12.0 Troubleshooting and customer service

The unit and components are manufactured using state-of-the-art production methods and tested several times to verify that they function correctly. If malfunctions should occur, please check the unit as detailed in the list below. Please inform your dealer if the unit is still not working correctly after all the function checks have been performed.

### Operational malfunctions

Malfunction	Possible cause	Remedial measures
The unit does not start or switches itself off.	Power failure	Check the voltage and if necessary wait for it to come back on.
	Mains fuse faulty. Master switch off.	Replace the mains fuse. Switch on the master switch.
	Power supply cable damaged.	Repair by specialist firm.
	Operational temperature range too low or exceeded.	Observe operational temperature range 16 to 35 °C.
	Internal reservoir full.	Empty reservoir.
	The ambient temperature of the unit lies outside the operating range (16 to 35 °C).	Do not operate the unit outside the operating range.
The unit works without or at reduced cooling capacity.	Exhaust air hose kinked, extended, routed downwards or blocked.	Ensure that there is a clear path for the exhaust air.
	Filter contamination. Inlet or outlet blower openings blocked by foreign bodies.	Clean the filter and reinsert it.
	Minimum clearances too small.	Observe minimum clearances.
	Windows and doors open/ heat load was increased.	Close doors and windows/ reduce heat load.
	Negative pressure in the installation room whilst the unit is operating with wall pass-through.	Balance out pressure in the installation room.
	"Cooling" operating mode is not selected.	Set "Cooling" operating mode.
	Unit will be switched by means of the timer function.	Press "I/O" key again.
	Temperature setting too high.	Reduce temperature.
The unit does not respond to the infra-red remote control.	Batteries in the remote control are empty or the distance to the receiver is too great.	Insert new batteries/reduce distance or change its location.
	After battery exchange, incorrect polarity of batteries.	Insert the batteries with the correct polarity. Observe marking.
Condensate discharge on unit.	Unit standing at an angle.	Stand upright and ensure a secure footing.
	The stopper for the condensate drain is not correctly inserted or is damaged.	Insert stopper correctly or replace if necessary.

### Error indication by code

Error code	Error description	Remedial measures
E1	Ambient temperature probe defective	Replace probe
E2	Probe, evaporator defective	Replace probe
E5	Control board defective	Replace the control board

## 13.0 Electrical wiring diagram

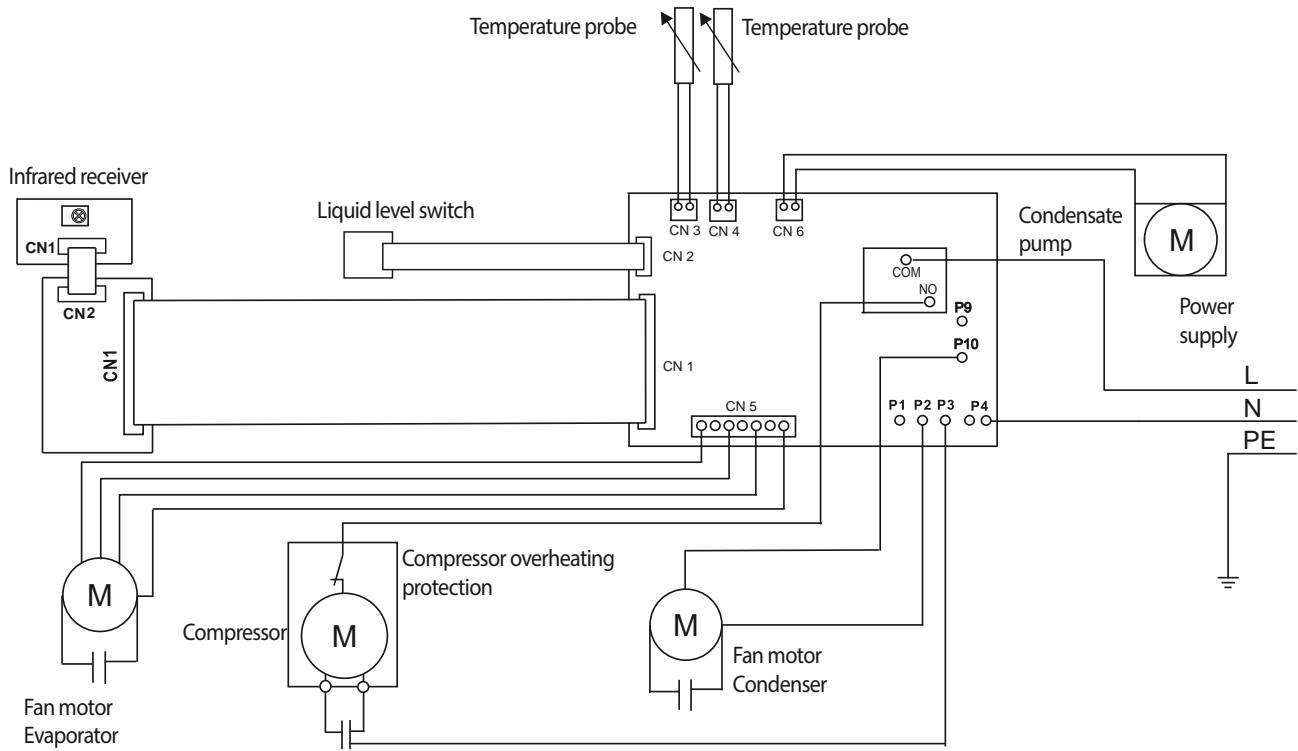


Fig. 9 Wiring diagram

# Local room air conditioner CMK 2950

## 14.0 Unit illustration

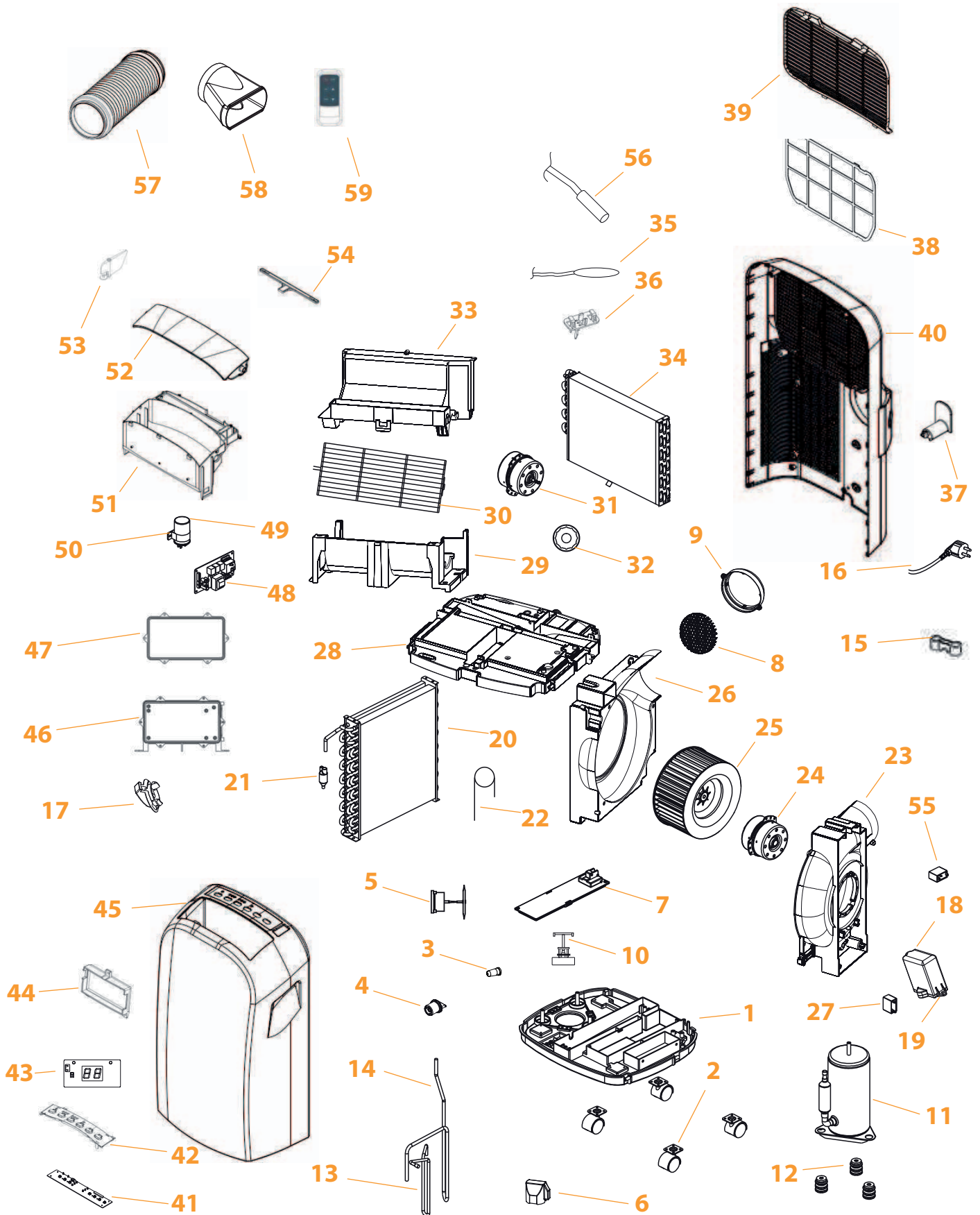


Fig. 10 Unit illustration

## 15.0 Spare parts list

No.	Designation
1	Base plate
2	Conveyor rollers
3	Rubber stopper
4	Sealing cap
5	Condensate pump
6	Protective cap
7	Condensate tray cover
8	Protection grid hose connection
9	Exhaust air hose connection nozzle
10	Liquid level switch
11	Compressor
12	Vibration dampers
13	Hot gas line
14	Suction pipe
15	Power supply cable strain relief
16	Power supply cable with Schuko plug
17	Exhaust air hose interlock
18	Capacitor cover
19	Capacitor box fastening
20	Condenser
21	Venturi distributor
22	Capillary tube injection
23	Housing part, exhaust air fan right
24	Exhaust air fan motor
25	Exhaust air fan wheel
26	Housing part, exhaust air fan left
27	Capacitor for exhaust air fan motor
28	Housing intermediate part
29	Housing part, recirculating fan motor bottom
30	Protection grid recirculating fan
31	Recirculating fan motor
32	Fan bearing
33	Housing part, recirculating fan motor top
34	Evaporator
35	Temperature probe, recirculation
36	Recirculation probe fastening
37	Power supply cover
38	Air filter
39	Air filter cover
40	Unit rear
41	Display board

When ordering spare parts, please state the EDP no., unit number and type (see name plate)!

## Local room air conditioner CMK 2950

No.	Designation
42	Operating panel
43	Display circuit board
44	Display board cover
45	Housing front
46	Board housing cover
47	Board housing
48	Control board
49	Compressor capacitor
50	Capacitor compressor fastening clip
51	Housing part air outlet, recirculation
52	Air deflection blade, horizontal
53	Air deflection blade, vertical
54	Shift lever for air deflection blade
55	Capacitor, recirculating fan motor
56	Air humidity probe
57	Exhaust air hose
58	Window nozzle
59	Infrared remote control

When ordering spare parts, please state the EDP no., unit number and type (see name plate)!

## 19.0 Technical data

Series		CMK 2950	CMK 2950 silver-grey
Operating mode		Local compact air conditioning unit for cooling	
Nominal cooling output <sup>1)</sup>	kW		2.9
Energy efficiency ratio - cooling			A
Energy efficiency rating EER <sup>1)</sup>			2.6
Energy consumption, hourly	kWh/60 min		1.0
Application area (room volume), approx.	m <sup>3</sup>		90
Adjustment range indoor unit	°C		+17 to +30
Operating range - indoor unit	°C/%r.H.		+16 to +35/35 to 85
Refrigerant			R290
Refrigerant, basic quantity	kg		0.30
CO <sub>2</sub> equivalent	t		0.00
Max. operating pressure, cooling cycle	kPa		1160/4120
Air flow volume per stage	m <sup>3</sup> /h		260/330/340
Sound pressure level per stage <sup>2)</sup>	dB(A)		49/50/51
Sound power level max.	dB(A)		65
Power supply	V/Ph/Hz		230/~ /50
Enclosure class	IP		X0
Electrical rated power consumption <sup>1)</sup>	kW		1.1
Electr. rated current consumption <sup>1)</sup>	A		4.54
Elec. starting current max., LRA	A		17
Exhaust air hose, length / diameter	mm/mm		1500/150
Dimensions - Height	mm		745
Width	mm		455
Depth	mm		395
Weight	kg		32.0
Standard colour		white	silver-grey
EDP no.		9196295	9196296

1) Room temperature TK 35 , FK 24

2) Distance 1m free field

# EU – Declaration of Conformity

Original Declaration of Conformity



We hereby declare that the units named below, as produced and sold by us, satisfy the relevant basic requirements of the EU directives, EU safety standards and product-specific EU standards.

Name of Manufacturer: **Intakt GmbH**  
Climia - Klima- und Wärmetechnik  
Niemeierstraße 13  
D - 32758 Detmold

Name of the CE representative: **Intakt GmbH**  
Climia - Klima- und Wärmetechnik  
Niemeierstraße 13  
D - 32758 Detmold

Equipment (machinery) variant: Local **room air conditioner**

Series / Class: CLIMIA CMK 2950, CMK 2950 silver-grey  
Series / Class Number: 1924..., 1925...

Applicable regulations  
(EU directives)

The aforementioned products comply

with the following EU directives: 2014/35/EU and 2014/30/EU  
2014/68/EU  
EU 206/2012 for implementing  
Directive 2009/125/EU  
RoHS II 2011/65/EU

Applicable standards: DIN EN 60335-1:2012+A11+A13  
DIN EN 60335-2-40:2003+A11+A12+A1+A3+A13  
DIN EN 62233:2008  
DIN EN 55014-1:2017  
DIN EN 55014-2:2015  
DIN EN 61000-3-2:2014  
DIN EN 61000-3-11:2000  
DIN EN 141511:2013+ EN 12102:2013

Detmold, 13/03/ 2020

Intakt GmbH

  
Signature Manager Director

**Intakt GmbH**  
Climia - Klima- und Wärmetechnik  
Niemeierstraße 13  
D - 32758 Detmold